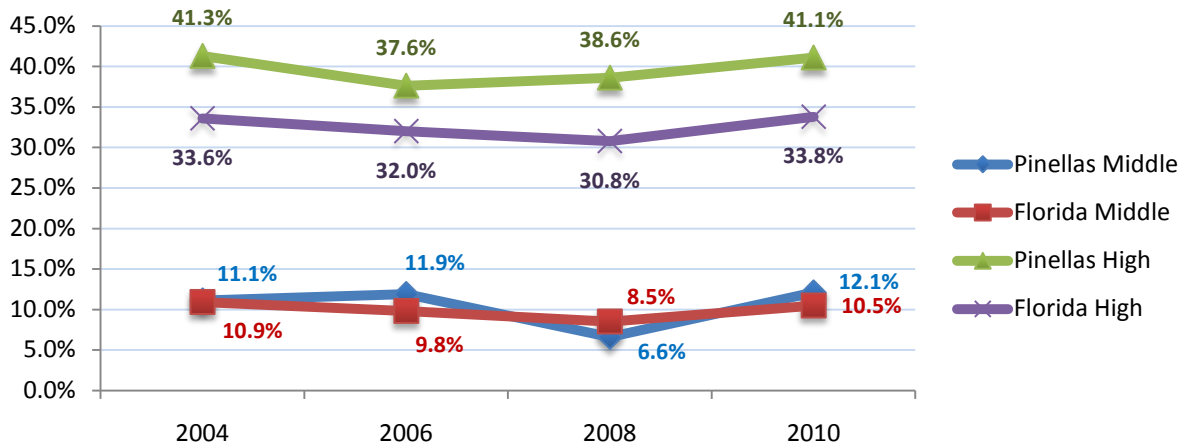


Marijuana Fact Sheet



- Marijuana is the second most commonly used drug among Pinellas County youth
- In 2010 in Pinellas County, 12.1% of middle school students and 41.1% of high school students used Marijuana at least once in their lifetime.¹
- In 2010 in Pinellas County, the percentage of high school students who reported using marijuana at age 13 or under was 14.3% versus 11.3% statewide.¹
- In 2010 in Pinellas County, 73.5% of middle and high school students perceive moderate or great risk of harm for marijuana use.¹
- In 2009 in Pinellas County, out of the 733 Alcohol and other drug charges by youth (under 18 years of age), **over half** (55.8%) were for Marijuana possession and 2.3% were for Marijuana Sales.²
- In 2010 in Pinellas County, **over half** (55.4%) of youth admitted to the Juvenile Addiction Receiving Facility (detox) reported Marijuana was their primary drug of use.³
- Among the youth given a drug screen in 2010 at the Pinellas Juvenile Assessment Center (814), 44.0% tested positive for an illicit substance of which **almost all** (43%) were for Marijuana.⁴
- In the 2008/2009 school year in Pinellas County, of the 642 drug related incidents in Pinellas County Schools, **over four out of five** (524 or 81.7%) were Marijuana related.⁵
- In 2008, 42.3% of Central Florida college students (including the Tampa-Bay area) reported using Marijuana in their lifetime.⁶
- In 2009 in Pinellas County, out of the 4,750 young adult (ages 18 to 25) drug-related possession charges, **almost half** (44.5%) were for Marijuana.²
- In 2009 in Pinellas County, out of the 984 young adult (ages 18 to 25) drug-related sales charges, **almost one out of four** (23.8%) were Marijuana related.²
- In 2010 in District 6 (Pinellas and Pasco Counties), there were 23 cases where Cannabis was present in toxicology reports at time of death.⁷
- In 2008 in Pinellas County, there were 37 individuals admitted to the emergency department with a Marijuana-related incident as their primary diagnose.⁸

Past 30-day Marijuana Use in Pinellas County versus State of Florida Averages



For more information on LiveFree! contact: livefree@operpar.org
 For more alcohol and other drug facts, visit: www.pinellascoalition.com

¹ 2010, Florida Youth Substance Abuse Survey
² 2009, Criminal Justice Information Systems
³ 2010, Personal Enrichment through Mental Health Services
⁴ 2010, Pinellas Juvenile Assessment Center
⁵ 2008/2009, Florida School Indicators Report
⁶ 2008, Core Alcohol and Drug Survey from the Florida Institutions of Higher Education
⁷ 2010, District 6 Medical Examiner Office
⁸ 2010, Florida Agency for Healthcare Administration (AHCA)